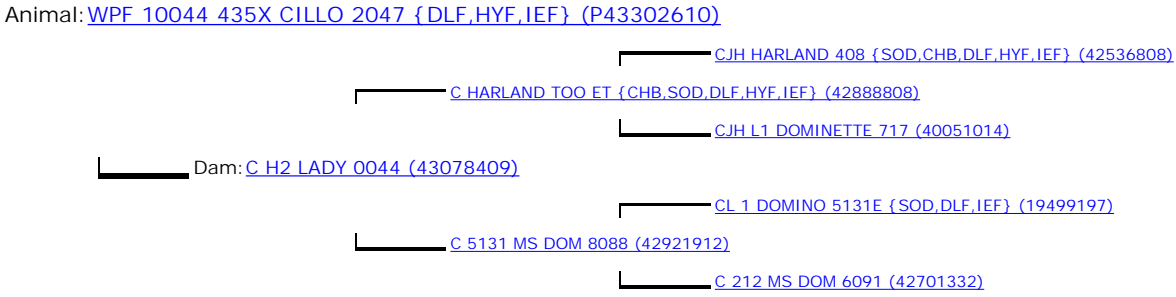
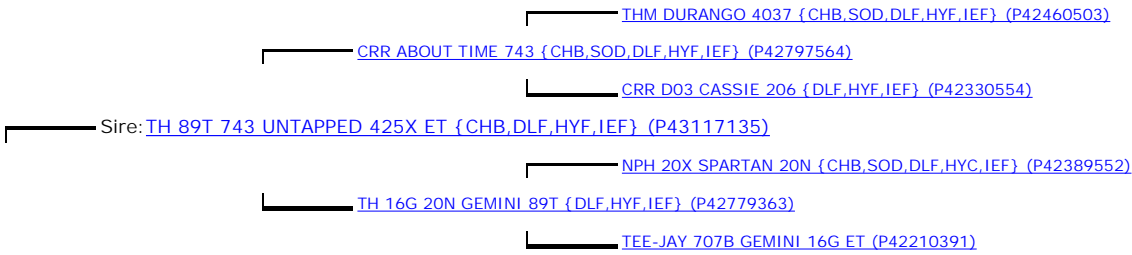


AMERICAN HEREFORD ASSOCIATION
 Box 014059, Kansas City, Missouri 64101
PERFORMANCE PEDIGREE

NAME: [WPF 10044 435X CILLO 2047 {DLF,HYF,IEF}](#) (P43302610) SEX: Bull HPS: Polled

CALVED: Mar. 14, 2012 TATTOO RE: 2047 LE: 2047 REGISTRY NUMBER: 43302610
 BREEDER: [WHISPERING PINE FARMS LLC, LONEPINE MT](#) OWNER: [JJB CATTLE COMPANY, INDEPENDENCE IA](#)

EPD VALUES	CE EPD	BW EPD	WW EPD	YW EPD	DMI EPD	SC EPD	SCF EPD	MM EPD	MG EPD	MCE EPD	MCW EPD	UDDR EPD	TEAT EPD	CW EPD	FAT EPD	REA EPD	MARB EPD	BMI EPD	BII EPD	CHB EPD
ANIMAL	+3.0 (.27)	+2.2 (.38)	+47 (.31)	+73 (.31)	0.0 (.11)	+0.7 (.15)	+13.7 (.12)	+22 (.18)	+45 (-)	-2.3 (.14)	+98 (.16)	+1.20 (.25)	+1.20 (.25)	+67 (.09)	-0.004 (.14)	+0.38 (.10)	+0.06 (.12)	+\$ 22 (-)	+\$ 19 (-)	+\$ 30 (-)
SIRE	-0.4 (.50)	+3.3 (.85)	+50 (.75)	+79 (.70)	0.0 (.20)	+0.8 (.51)	+15.5 (.34)	+15 (.54)	+40 (-)	-5.3 (.46)	+122 (.45)	+1.20 (.65)	+1.20 (.68)	+56 (.24)	-0.014 (.25)	+0.26 (.24)	+0.06 (.24)	+\$ 24 (-)	+\$ 20 (-)	+\$ 26 (-)
DAM	+6.0 (.30)	+1.6 (.41)	+47 (.32)	+72 (.34)	0.0 (.11)	+0.7 (.19)	+11.8 (.15)	+28 (.24)	+51 (-)	+2.2 (.16)	+75 (.22)	+1.20 (.36)	+1.20 (.37)	+75 (.11)	+0.016 (.14)	+0.42 (.10)	+0.03 (.12)	+\$ 21 (-)	+\$ 18 (-)	+\$ 33 (-)



		INDIVIDUAL PERFORMANCE		PROGENY	
				NUMBER	AVERAGES
Animal	Birth Wt.	92.0 %		6	100.5 %
	Weaning Wt.	102.0 %		5	98.6 %
	Yearling Wt.	99.0 %			
	Yearling Ht.				
	Daughters: 1				
	Calves: 2				
	Ratio: 99.0				
SIRE	Birth Wt.			66	99.7 %
	Weaning Wt.			60	100.6 %
	Yearling Wt.			11	98.7 %
	Yearling Ht.			3	6.1 Frame
	Daughters: 41				
	Calves: 56				
	Ratio: 99.4				
DAM	Birth Wt.	93.0 %		3	93.0 %
	Weaning Wt.	100.0 %		2	109.0 %
	Yearling Wt.	98.0 %		1	99.0 %
	Yearling Ht.				
	Daughters: 1				
	Calves: 1				
	Ratio: 100.0				



PERFORMANCE AS OF: 01/23/18

Jack A. Ward
 SECRETARY, AMERICAN HEREFORD ASSOCIATION