

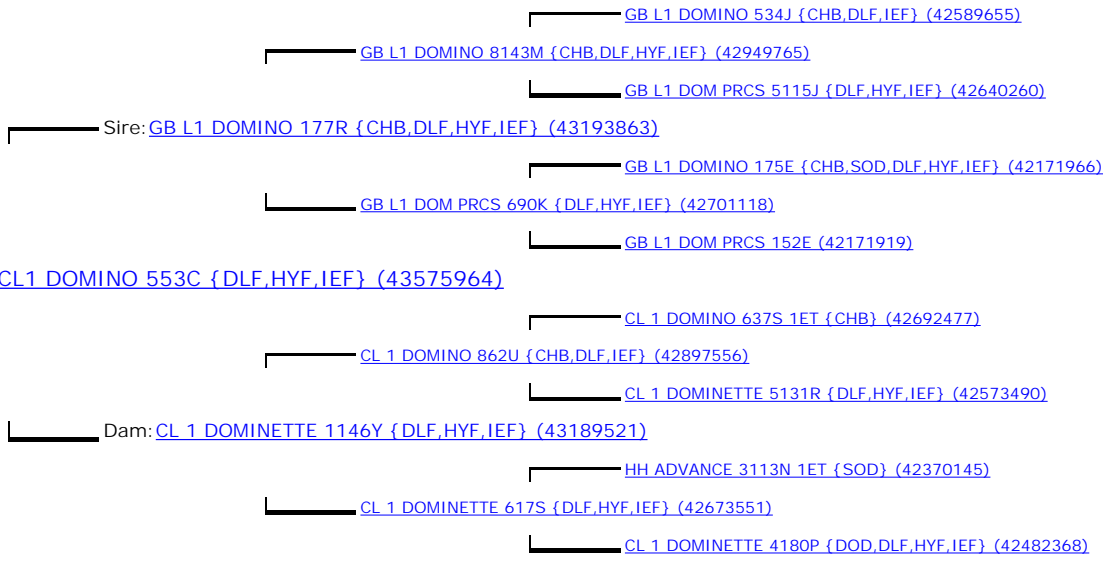
AMERICAN HEREFORD ASSOCIATION
 Box 014059, Kansas City, Missouri 64101
PERFORMANCE PEDIGREE

NAME: [CL1 DOMINO 553C {DLF,HYF,IEF} \(43575964\)](#) SEX: Bull HPS: Horned

CALVED: Jan. 10, 2015 TATTOO RE: LE: 553 REGISTRY NUMBER: 43575964

BREEDER: [MARK W COOPER, WILLOW CREEK MT](#) OWNER: [MARK W COOPER, WILLOW CREEK MT](#)
[K7 HEREFORDS, LOCKRIDGE IA](#)
[VAN NEWKIRK HEREFORDS, OSHKOSH NE](#)

EPD VALUES	CE	BW	WW	YW	MM	MG	MCE	MCW	UDDR	TEAT	SC	CW	FAT	REA	MARB	BMI	CEZ	BII	CHB
	EPD (Acc)	EPD (Acc)	EPD (Acc)	EPD (Acc)	EPD (Acc)	EPD (Acc)	EPD (Acc)	EPD (Acc)	EPD (Acc)	EPD (Acc)	EPD (Acc)	EPD (Acc)	EPD (Acc)	EPD (Acc)	EPD (Acc)	EPD (Acc)	EPD (Acc)	EPD (Acc)	EPD (Acc)
ANIMAL	+3.4 (.34)	+2.4 (.69)	+63 (.40)	+93 (.43)	+31 (.19)	+62 (-)	+1.0 (.28)	+95 (.36)	+1.32 (P)	+1.32 (P)	+1.3 (.35)	+69 (.32)	+0.001 (.31)	+0.49 (.31)	+0.18 (.28)	+\$ 23 (-)	+\$ 17 (-)	+\$ 19 (-)	+\$ 33 (-)
SIRE	+4.2 (.56)	+1.7 (.88)	+64 (.83)	+87 (.84)	+27 (.44)	+59 (-)	+0.6 (.43)	+94 (.54)	+1.57 (.60)	+1.53 (.58)	+0.9 (.76)	+71 (.61)	+0.042 (.59)	+0.26 (.57)	+0.21 (.57)	+\$ 20 (-)	+\$ 17 (-)	+\$ 15 (-)	+\$ 30 (-)
DAM	+1.8 (.32)	+3.4 (.52)	+58 (.44)	+84 (.46)	+33 (.31)	+62 (-)	+1.2 (.28)	+84 (.39)	+1.18 (.39)	+1.10 (.38)	+1.3 (.31)	+64 (.36)	-0.006 (.38)	+0.41 (.38)	+0.12 (.34)	+\$ 21 (-)	+\$ 16 (-)	+\$ 18 (-)	+\$ 29 (-)



Animal: [CL1 DOMINO 553C {DLF,HYF,IEF} \(43575964\)](#)

	INDIVIDUAL PERFORMANCE	PROGENY	
		NUMBER	AVERAGES
Animal	Birth Wt.	108.0 %	101.0 %
	Weaning Wt.	100.0 %	102.2 %
	Yearling Wt.	104.0 %	
	Yearling Ht.		
	Daughters: -		
	Calves: -		
	Ratio: -		
SIRE	Birth Wt.	94.0 %	100.0 %
	Weaning Wt.	104.0 %	101.8 %
	Yearling Wt.	104.0 %	100.3 %
	Yearling Ht.	6.0 Frame	5.8 Frame
	Daughters: 43		
	Calves: 53		
	Ratio: 98.7		
DAM	Birth Wt.	97.0 %	104.3 %
	Weaning Wt.	113.0 %	99.7 %
	Yearling Wt.	108.0 %	99.7 %
	Yearling Ht.		
	Yr. Sc. Cir.		36.5 Cm.
	Fat Depth	115.0 %	91.6 %
	Ribeye Area	107.0 %	103.6 %
IMF	86.0 %	95.7 %	



PERFORMANCE AS OF: 09/22/17

Jack A. Ward
 SECRETARY, AMERICAN HEREFORD ASSOCIATION